



Growing Connected

Capital Campaign



*“For the vision is for the appointed time;
it hastens toward the goal and it will
not fail. Though it tarries, wait for it;
For it will certainly come, it will not delay.”*

Habakkuk 2:3



MESSAGE FROM THE PASTOR

GROWING CONNECTED

Dear members and friends of The First Reformed Church of Pompton Plains

One of the highest honors of being a pastor is helping a church dream and move toward a God-given vision, then thrive.

It is my privilege to be a part of the *Growing Connected* Capital Campaign. This campaign will strengthen the work our church is doing within our community and the work the community is doing through our church and campus.

For nearly 300 years, our church has been at the intersection of faith and life in this area. We carry the legacy of generations. As a church, we have a rich history of opening our doors wide to the community and partners, serving our neighbors near and far. This is something for which FRC is known and respected. Recently, we expanded both the reach and scope of our ministry. By faith, people's lives have been transformed by encountering Christ at FRC. Now, we are ready to take our ministry to the next level by *Growing Connected* in a new way.

Over the past year, we've had many conversations with members, staff, volunteers and community partners to identify ways we can better serve both our congregation and the broader community. Through those conversations, we have developed a vision that we believe God is calling us to live out.

The *Growing Connected* Capital Campaign has three parts:

- 1) Expand ministry and mission
- 2) Increase hospitality and security
- 3) Create a lasting legacy

You can read about each of those visions and associated projects in this brochure. It is intended to help you visualize the future with renovations and additions that will make our campus more welcoming, versatile, functional, accommodating and safe.

Ultimately, this campaign is not about buildings. It is about people – the people we and our partners journey with and serve, both in and through our congregation and campus.

We are asking you to do three things: Pray. Learn. Support. By contributing to the *Growing Connected* Capital Campaign, you are helping FRC thrive – opening our doors, hearts, and hands to the future.



Kathleen Edwards-Chase
LEAD PASTOR

A handwritten signature in black ink that reads "Pastor Kathleen".

GROWING CONNECTED

At the Intersection of Faith and Community



“The church helps the community in powerful ways that complement and enhance what we can offer as clinicians and hospital administrators.

Stephanie Schwartz – President, Chilton Medical Center



“FRC laid the foundation for Community Partners for Hope, which is uniting organizations throughout the community to tackle our toughest societal issues.”

Doug Cook – Church Member and Chairman, Community Partners for Hope



“FRC through Community Partners for Hope and the public-school system have jointly engaged our youth about important issues, like food insecurity, digital citizenship, bullying, addiction and suicide.”

Rich Hayzler – Pequannock Valley Middle School Principal



“We have a responsibility to generations past and present to keep our buildings and grounds in good repair so they can be used to do God’s work.”

Gene McKeown – Church Member



“FRC is a center point for everything we need for this town. Our disaster relief plan includes coming across the street and saying “Help!”

Rich Phelan – Former Mayor of Pequannock Township



“Our church partners with so many organizations and provides a place for them here. By investing in our church, we also invest in those organizations.”

Bonnie Holmes – Church Member



“The church opens its doors for the Food Pantry, which serves 50% of our Pequannock clients, providing encouragement and support in their quest to achieve wellness. FRC is one of NewBridge’s greatest, strongest partners, and always has been.”

Robert Parker – CEO, NewBridge Services

A Vision of Expanded Mission and Ministry



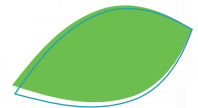
As the central point of much ministry and mission, Friendship Hall is the anchor site for the *Growing Connected* Capital Campaign.

Out of Friendship Hall, we drive response to disaster relief in our community. We forge plans and form teams that mitigate the impact of floods, settle refugees, alleviate food insecurity, bolster youth programs, and tackle emerging societal issues. We open our space

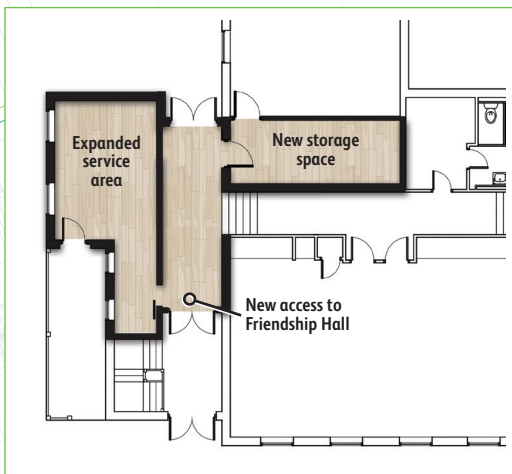
to organizations and partners in the region to help people move forward, and strengthen the community. Regular events engage the community through worship, awareness programs, the arts, educational workshops, scouting activities, skills building, meditation and fellowship.

Updating Friendship Hall will allow us to:

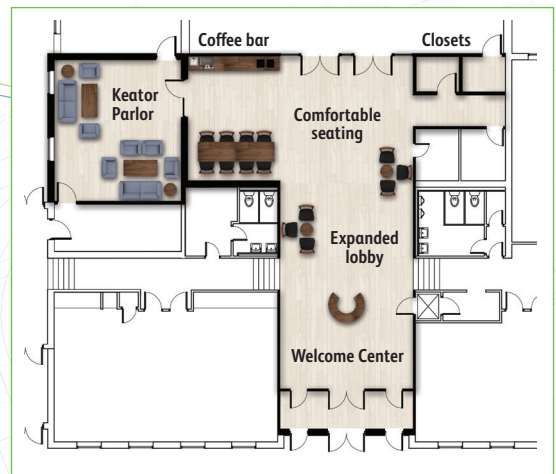
- Utilize comfortably year-round with air conditioning
- Improve acoustics for worship and events
- Improve connection with coffee bar in expanded lobby with functional seating
- Offer meals out of a professional kitchen optimized for function
- Serve more clients and easily access storage for food pantry ▼
- Friendship Hall lobby expanded and Keator Parlor remodeled for multi-use space ▼



Food Pantry



Friendship Hall Lobby and Keator Parlor



A Vision of Hospitality and Security

At FRC, we practice open doors, open hearts, open hands. We are open and affirming of people from all walks of life. But our campus is difficult to navigate for guests and handicapped individuals. It is difficult to assure buildings are locked at the end of the day. Security for all who enter is among our highest priorities.

Updating our security and access will allow us to:

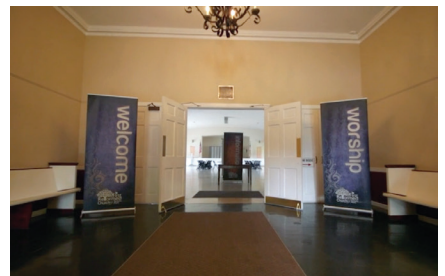
- Digitize building access and automate locking main doors (campus)
- Place security cameras in a few key areas (campus)
- Take the next step toward handicapped accessibility (Sanctuary)
- Make it easier for guests to navigate our corridors with directional signage (campus)
- Provide a welcome center for information and sign-ups (Friendship Hall lobby) ▼



Friendship Hall, Welcome Center and Lobby



After



Before



A Vision of Lasting Legacy

We have inherited a campus and property that has served God through this congregation and community for generations. We seek to provide the next generation with buildings that are safe, functional, versatile and suitable to sustain vital ministry.

Updating and repairing our buildings will allow us to:

- Provide Children’s Ministry with a bathroom in education wing
- Assure warmth in Friendship Hall and Grace Chapel (boilers)
- Repave driveway around back of campus
- Improve and repair bathroom by the nursery
- Scrape and paint Sanctuary windows
- Create airflow and repair breezeway between Sanctuary and Ministry Center



For **312** years, the church has demonstrated the faith and courage to live as people *Growing Connected* to God, one another, and the wider community. We are here today because of the courageous men and women who prayed and dreamed about God’s hopes for the future of our church.

1706 Dutch settlers began worship services in homes with first recorded baptism

1736 The church formally organized and built along the Pompton River

1769 Built new Sanctuary on its present site

1877 Built Grace Chapel

1926 Laid cornerstone of Church House Ministry Center



1937 The Sanctuary caught fire and burned down, with only exterior walls remaining

1939 New Sanctuary dedicated, funded by both the congregation and community

1956 Purchased 1788 historic stone house as home for senior pastor, named “Friendly Manse”



1965 Dedication of Friendship Hall

1991 Purchased property and built “Grace Manse” to house second minister

Vision Estimated Cost



The estimated cost to achieve our *Growing Connected* Visions adds up to \$1 million. Pledges to the *Growing Connected* Capital Campaign may be given over a 3-year period, 2019 to 2021. Pledge Sunday is November 18.

Location	Renovation and/or new work	Estimated Cost
Grace Manse	Replace old roof	\$10,000
Ministry Center	Replace old roof	\$35,000
Friendship Hall	<p>Main Hall: Add ceiling panels and wall material. Insulate walls for energy savings. Add stage curtain and lighting. Upgrade sound system. Install central air conditioning.</p> <p>Foyer: Expand for multi-use space. Add informal seating areas, welcome center and coffee/refreshment bar. Add ceiling panels, wall material and new flooring for better acoustics.</p> <p>Keator Parlor: Remodel to accommodate multi-purpose use and access to kitchen.</p> <p>Kitchen: Renovate for better work flow, modern capabilities, energy-efficient equipment and temperature-controlled environment.</p> <p>General: Install generator for emergency relief support.</p>	\$550,000
Ministry Center	Build bathroom on Children’s Education level (2nd Floor)	\$45,000
Food Pantry	Expand service area inside food pantry, remove a wall for interior-access to Friendship Hall, move food storage closer to pantry.	\$50,000
Sanctuary	Remodel front pew to accommodate handicap seating. Scrape and paint windows. Remodel breezeway.	\$100,000
Campus	Replace/Repair Friendship Hall and Grace Manse boilers	\$45,000
Campus	Renovate nursery bathroom	\$10,000
Campus	Install computerized security system and cameras	\$35,000
Campus	Pave driveway around back of campus	\$30,000
Campus	Purchase used van for youth & other ministries	\$25,000
Ministry Center	Install elevator for handicap accessibility	\$65,000*

*Partial cost. The total cost to be supplemented with grants.

Giving to the *Growing Connected* Vision

The success to achieve the *Growing Connected* vision will be made possible by your generosity.

Key date: Capital Campaign Pledge Sunday: November 18

We are asking you to spend time praying about making a pledge, learning about the vision and resulting projects and then pledge your support. We are asking for a 36-month commitment “above and beyond” your regular financial gifts/offering to FRC.

How can I give to support the Capital Campaign?

A financial donation is the most common way. You can also give real estate, stocks, bonds, income tax refunds, irrevocable or revocable trusts - there are many ways to give! Your company may offer matching gifts. If you are age 70 ½, you can take advantage of tax benefits from IRA withdrawals. Another option is to donate gifts in-kind (furniture, construction materials, etc.) that meet the specifications of the Capital Campaign projects.

How much should I give to the Capital Campaign?

That’s between you and God. There is a scripture passage, ‘Not everyone has been blessed in a similar way.’ Sacrificial giving is an element of the Christian faith.

Whatever amount you give will represent something that is a heartfelt spiritual decision and not simply an afterthought or an obligation.

OUR ASK

PRAY
LEARN
SUPPORT

Two separate brochures are available to answer questions: “Frequently Asked Questions” and “Generosity Guide”

You are also welcome to contact Dolores Wagoner, Finance Manager: dolores@frc-pp.org and (973) 835-1144 (x14).

Learn more about our *Growing Connected* Capital Campaign on our website: firstreformedchurch.com

